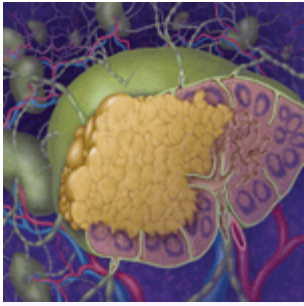


## Spanning the Continuum of Care: Optimizing Patient Outcomes in NHL

Upcoming Meeting in Sedona, Arizona



[CLICK HERE TO REGISTER](#)

### [Register Today!](#)

Join Arizona Oncology Associates and Dr. Deborah Lindquist for an innovative, CME/CE-certified dinner meeting that will focus on the most up-to-date information on the practical application of therapeutic strategies to improve the treatment and management of patients with non-Hodgkins lymphoma in the community practice setting.

### [Submit a Patient Case for Discussion!](#)

At the end of your registration, you will have the opportunity to submit a patient case for discussion at this meeting. You may also [click here](#) to submit a case now.

The target audience for this activity is community-based physicians, registered nurses, and other healthcare providers caring for patients with non-Hodgkin's lymphoma.

*Note: This announcement is intended for members of the program target audience only. In adherence to the ACCME Standards of Commercial Support, if you are affiliated with a commercial interest (eg, pharmaceutical or medical devices company), please do not forward this message or otherwise assist with recruitment for this CME-certified activity.*

---

### DATES, TIMES, AND LOCATION

Monday, July 19, 2010  
6:00 PM - 6:30 PM: Registration  
6:30 PM - 8:30 PM Seminar

Heartline Café  
Fireside Room  
1610 West Highway 89A  
Sedona, Arizona

To register for these meetings, [click here](#).

---

### AGENDA

Welcome and Introduction

Presentation 1: Evolving Treatment Options for Waldenström's Macroglobulinemia

- Didactic Presentation
- Case Discussion
- Question and Answer Session

Presentation 2: Multidisciplinary Approaches for the Diagnosis and Optimal Treatment of MCL

- Didactic Presentation
- Case Discussion

• Question and Answer Session

FACULTY

Deborah Lindquist, MD, FACP  
Northern Arizona Division of Arizona  
Oncology Associates, PC  
Sedona, Arizona

Lauren Pinter-Brown, MD  
*Clinical Professor*, Department of Medicine, Hematology/Oncology  
Jonsson Comprehensive Cancer Center  
University of California at Los Angeles  
Los Angeles, California



ANNENBERG CENTER  
FOR HEALTH SCIENCES  
AT EISENHOWER



CLINICAL CARE OPTIONS<sup>®</sup>  
ONCOLOGY

GOAL

The goal of this activity is to provide community-based clinicians with the opportunity for timely, engaging, and personalized education on achieving accurate diagnosis and selecting appropriate treatment from initial diagnosis through refractory disease for various types of non-Hodgkin's lymphoma.

TARGET AUDIENCE

This activity is intended for community-based medical oncologists, hematologic oncologists, pathologists, registered nurses, and other healthcare professionals who provide care for patients with non-Hodgkin's lymphoma.

LEARNING OBJECTIVES

Upon completion of this activity, participants should be able to:

Evolving Treatment Options for Waldenström's Macroglobulinemia

- Review the pathophysiology of Waldenström's macroglobulinemia
- Discuss challenges for and strategies to address obtaining accurate pathological diagnosis of Waldenström's macroglobulinemia
- Review current and novel treatment options for patients with Waldenström's macroglobulinemia
- Cite currently accruing clinical trials and centers of excellence for the treatment of Waldenström's macroglobulinemia
- Describe strategies for providing appropriate care and counsel for patients and their families

Multidisciplinary Approaches for the Diagnosis and Optimal Treatment of MCL

- Review the pathophysiology of mantle cell lymphoma and its clinical presentation
- Discuss challenges for and strategies to address obtaining accurate pathological diagnosis of mantle cell lymphoma
- Describe novel approaches under clinical investigation for upfront, maintenance, and subsequent lines of therapy for mantle cell lymphoma
- Cite currently accruing clinical trials and centers of excellence for the treatment of mantle cell lymphoma
- Describe strategies for providing appropriate care and counsel for patients and their families

PHYSICIAN CONTINUING MEDICAL EDUCATION

Accreditation Statement

This activity has been planned and implemented in accordance with the Essential Areas and policies of the Accreditation Council for Continuing Medical Education (ACCME) through the joint sponsorship of the Annenberg Center for Health Sciences at Eisenhower (Annenberg Center) and Clinical Care Options. The Annenberg Center is accredited by the ACCME to provide continuing medical education for physicians.

Credit Designation

The Annenberg Center designates this educational activity for a maximum of 2.0 *AMA PRA Category 1 Credit(s)*<sup>™</sup>. Physicians should only claim credit commensurate with the extent of their participation in the activity.

NURSING CONTINUING EDUCATION

Accreditation Statement

Annenberg Center for Health Sciences is accredited as a provider of continuing nursing education by the American Nurses Credentialing Center's Commission on Accreditation.

Credit Designation

A maximum of 2.0 contact hours may be earned for successful completion of this activity. A statement of credit will be issued only upon receipt of a completed activity evaluation form and will be mailed to you.

#### DISCLOSURE OF CONFLICTS OF INTEREST

The Annenberg Center requires instructors, planners, managers, and other individuals who are in a position to control the content of this activity to disclose any real or apparent conflict of interest they may have as related to the content of this activity. All identified conflicts of interest are thoroughly vetted by the Annenberg Center for fair balance, scientific objectivity of studies mentioned in the materials or used as the basis for content, and appropriateness of patient care recommendations. There are no fees required to participate in this activity.

Supported by an educational grant from Millennium Pharmaceuticals, Inc.



---

#### Clinical Care Options Oncology

[Conference Coverage](#)

[Management Series](#)

[Treatment Updates](#)

[Interactive Cases](#)

[Nursing Resource Center](#)

[Live Meetings](#)

[RSS / Podcasts](#)

[My CME Tracker](#)

[Free Bookstore](#)

[Slide Downloads](#)



#### CCO INPRACTICE SEARCH RESULTS

[NHL](#)

Review CCO's new free point-of-care resource for fast, easy access to a comprehensive online textbook plus drug information, treatment guidelines, PubMed, Conference Coverage, and CCO CME programs. To start, [click here](#).

Copyright 2010 Clinical Care Options, LLC. All rights reserved. 1894 Preston White Drive, Suite 110, Reston, VA 20191-5433

If you would like to be removed from future notices about this meeting, reply to this email with that request.